

Local Organizations

To learn more about stormwater, please contact these local organizations:

Nashua River Watershed Association

592 Main St., Groton MA
(978) 448-0299
www.nashuariverwatershed.org

Mass. Audubon @ Broad Meadow Brook Sanctuary

414 Massasoit Rd., Worcester MA
(508) 753-6087
www.massaudubon.org

Mass. Audubon @ Wachusett Meadow Sanctuary

113 Goodnow Rd., Princeton MA
(978) 464-2712
www.massaudubon.org

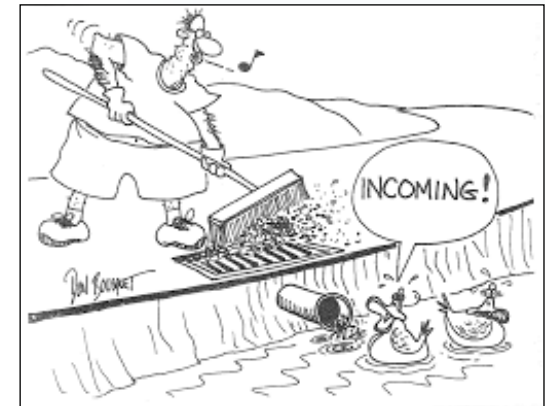
This brochure was created by a team of students from Worcester Polytechnic Institute's Water Resource Outreach Center in collaboration with the Fitchburg Department of Public Works and Public School System.



If you have any questions regarding this brochure, please Nick Erickson, Civil Engineer at the Fitchburg Department of Public Works.

Phone: (978) 829-1905
Email: nerickson@fitchburgma.gov

Only Rain Down the Drain!



What is Stormwater?

- Water from rain or snow that is not absorbed into the ground.
- This water flows across lawns, sidewalks, and streets until it reaches...



A STORM DRAIN enters into a maze of underground pipes.

Why Should You Care?

- Stormwater picks up all of the pollutants found on lawns, sidewalks, and streets!

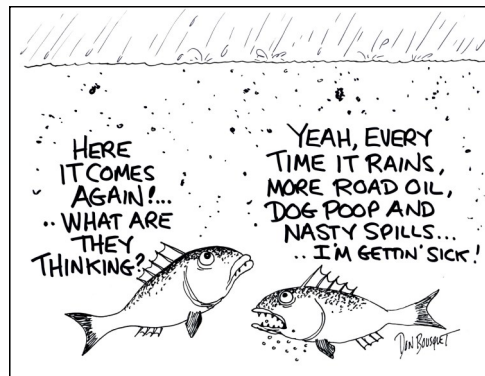
Stormwater Myth:

Stormwater is cleaned at a sewage treatment plant before it flows into rivers and lakes.

FALSE!

Stormwater systems are separate from sewer systems, and do NOT go to a treatment plant.

- The result is stormwater and its pollutants flow straight into the Nashua River **every day** it rains!



What Can You Do?

There are many ways you can keep stormwater clean:

#1: Only Rain Down the Drain

Storm drains dump into our environment. So, never dump any trash, oils, grass clippings, or chemicals down a storm drain.

#2: Pick Up The Poo

Animal waste contain bacteria that pollute water. Always pick up after your pet using compostable bags and dispose of in trash.

#3: Go Natural

Fertilizers contain harmful phosphorous and nitrogen which wash into ecosystems when it rains. Use natural manures and compost instead!

